

Comune di  
**Lovere**  
(BG)

**Catasto del suolo e  
sottosuolo urbano**

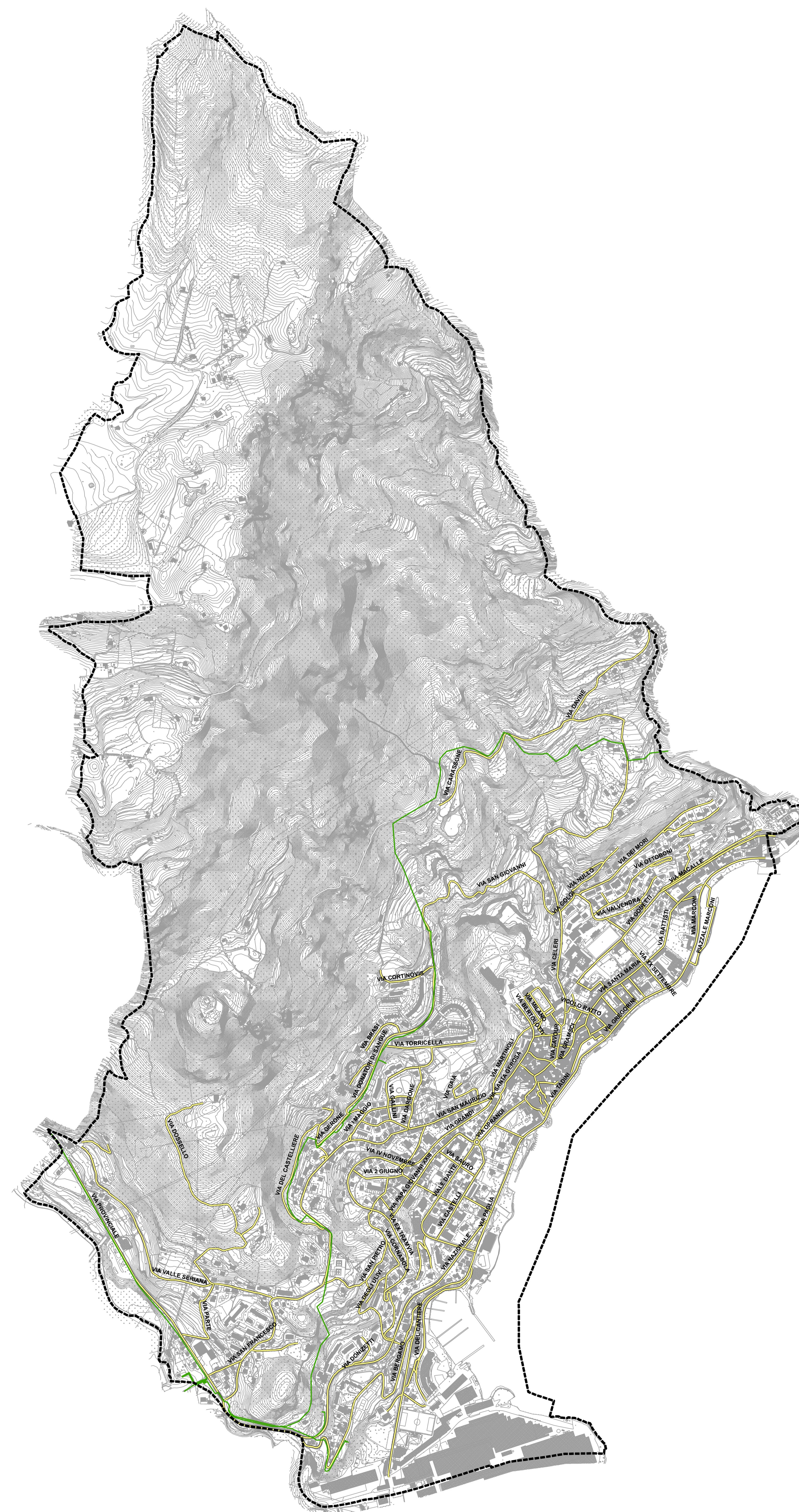
**Rete Snam Gas**

Scala 1:6000






Ottobre 2013



Via Grasselli 7 - 20137 Milano - tel. 02730981, fax 0292879746  
info@studioambientale.it - www.studioambientale.it



**Legenda**

-  Confine comunale
-  Strade (n.100; 29.239 m)
-  Piazze (n. 6)
-  Gas - rete -
-  Estensione della rete su strade urbane (2.151 m)

Estensione totale della rete nel territorio comunale 5.643 m