

**Comune di  
Lovere  
(BG)**

**Catasto del suolo e  
sottosuolo urbano**

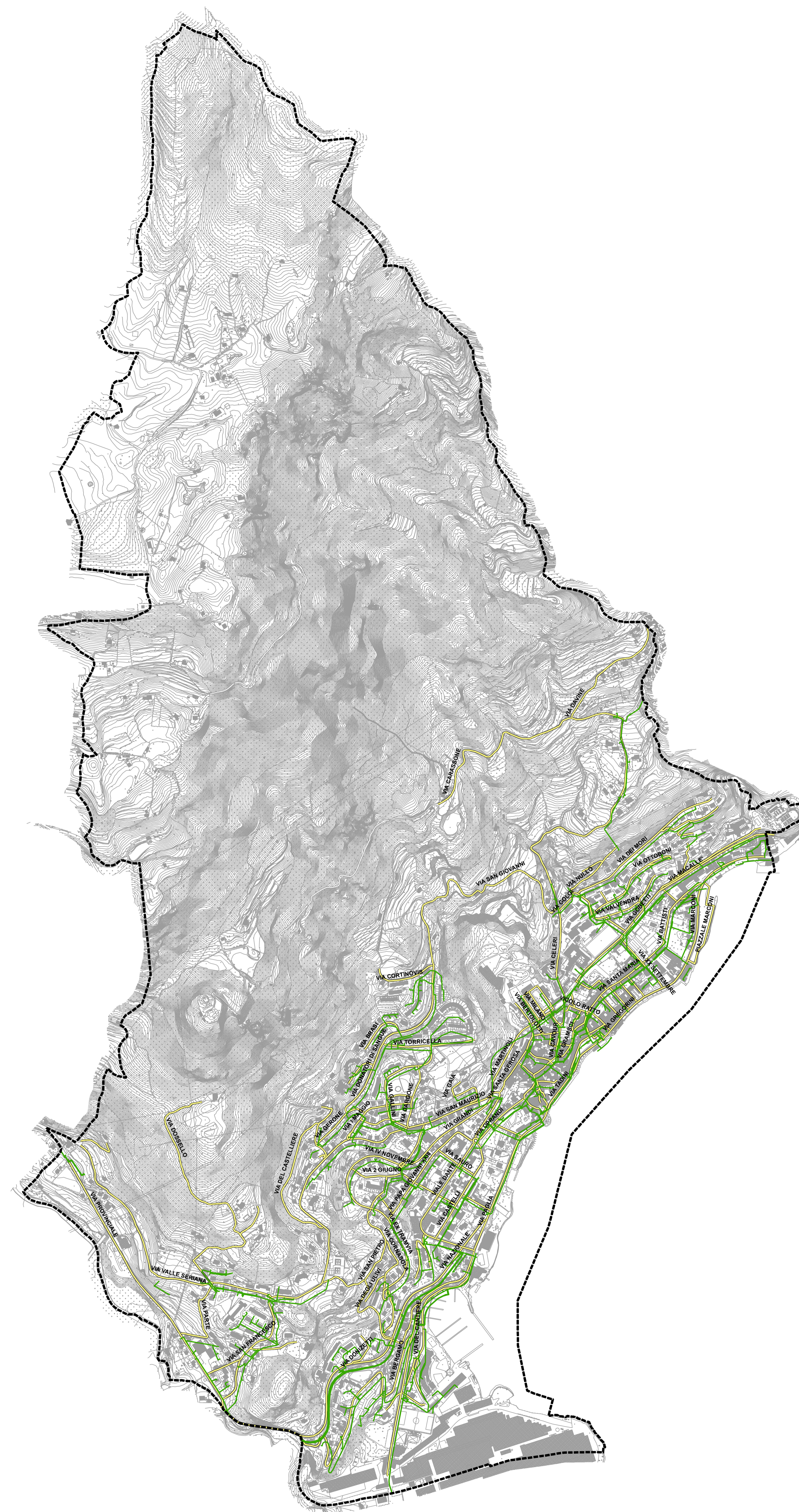
**Rete Telecom**

**Scala 1:6000**






**Ottobre 2013**



Via Grasselli 7 - 20137 Milano - tel. 02730981, fax 0292879746  
info@studioambientale.it - www.studioambientale.it



**Legenda**

-  Confine comunale
-  Strade (n.100; 29.241 m)
-  Piazze (n. 6)
-  Telefonia - rete -
-  Estensione della rete su strade urbane (18.468 m)

Estensione totale della rete nel territorio comunale 34.697 m