

**Comune di  
Lovere  
(BG)**

**Catasto del suolo e  
sottosuolo stradale urbano  
nell'ambito del PUGSS**

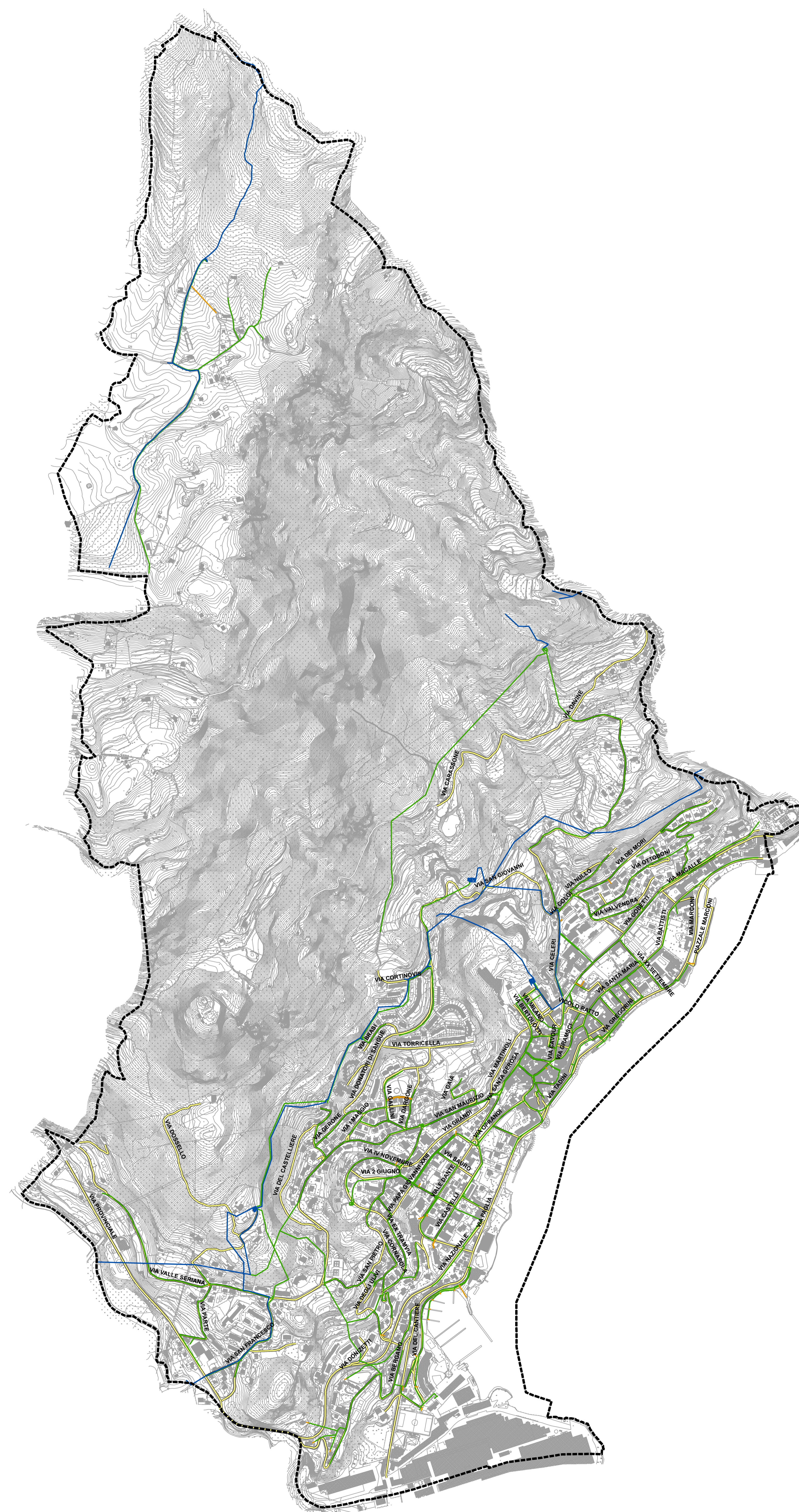
**Rete Acquedotto**

**Scala 1:6000**









**Ottobre 2013**



Via Grasselli 7 - 20137 Milano - tel. 02730981, fax 0292879746  
info@studioambientale.it - www.studioambientale.it



**Legenda**

-  Confine comunale
-  Strade (n.100; 29.241 m)
-  Piazze (n. 6)
  
-  Acquedotto - rete -
-  Estensione della rete su strade urbane (18.389 m)
  
-  Rete Adduttrice
-  Rete Distributrice
-  Rete Allacciamento

Estensione totale della rete nel territorio comunale 33.757 m