

**Comune di  
Lovere  
(BG)**

**Catasto del suolo e  
sottosuolo urbano**

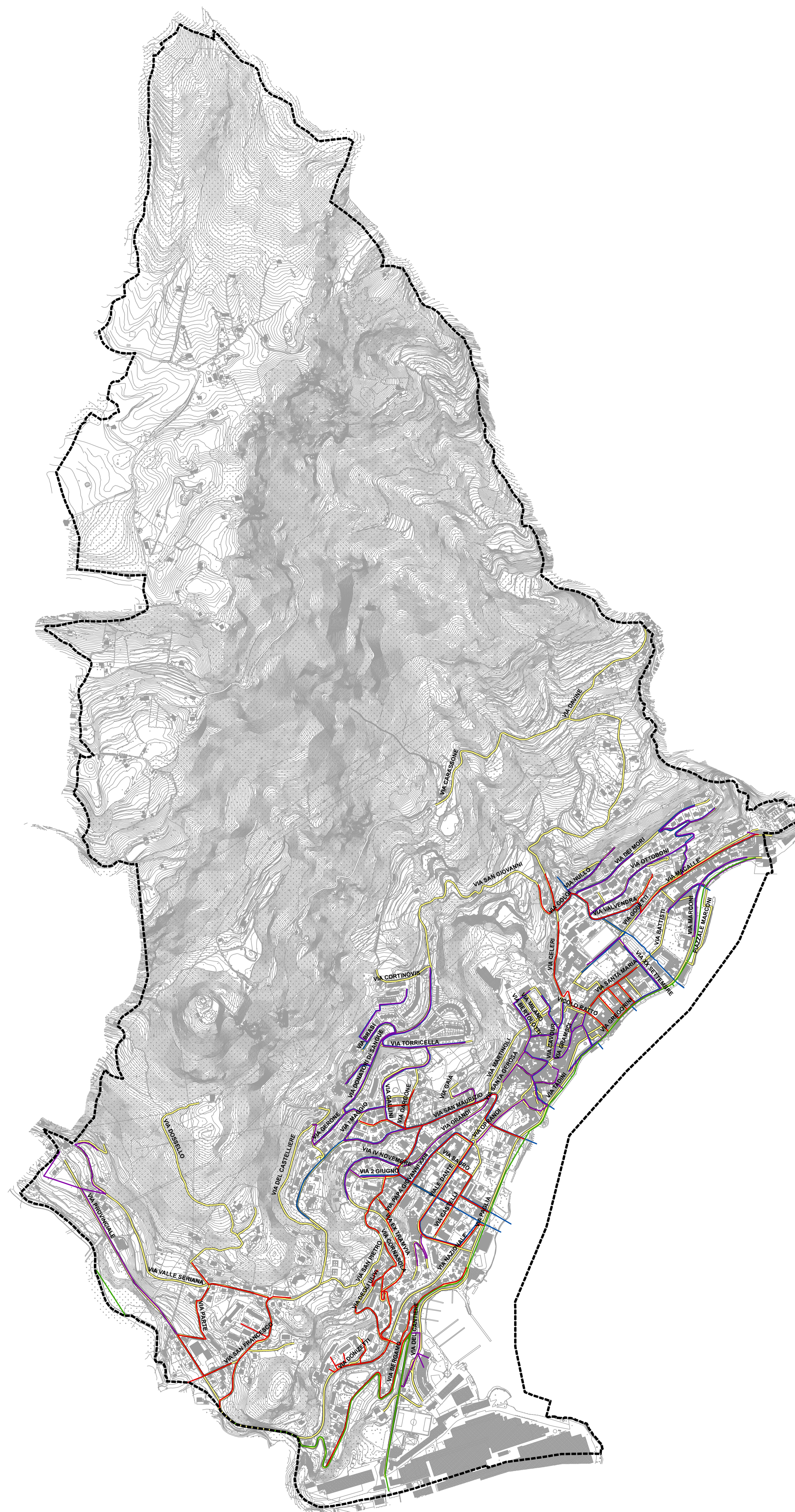
**Rete Fognatura**

Scala 1:6000









Ottobre 2013



Via Grasselli 7 - 20137 Milano - tel. 02730981, fax 0292879746  
info@studioambientale.it - www.studioambientale.it



**Legenda**

-  Confine comunale
-  Strade (n.100; 29.241 m)
-  Piazze (n. 6)
- Fognatura - rete -**
-  Estensione della rete su strade urbane (30.428 m)
-  Bianche
-  Collettore Consortile
-  Nere
-  Miste

Estensione totale della rete nel territorio comunale 31.393 m